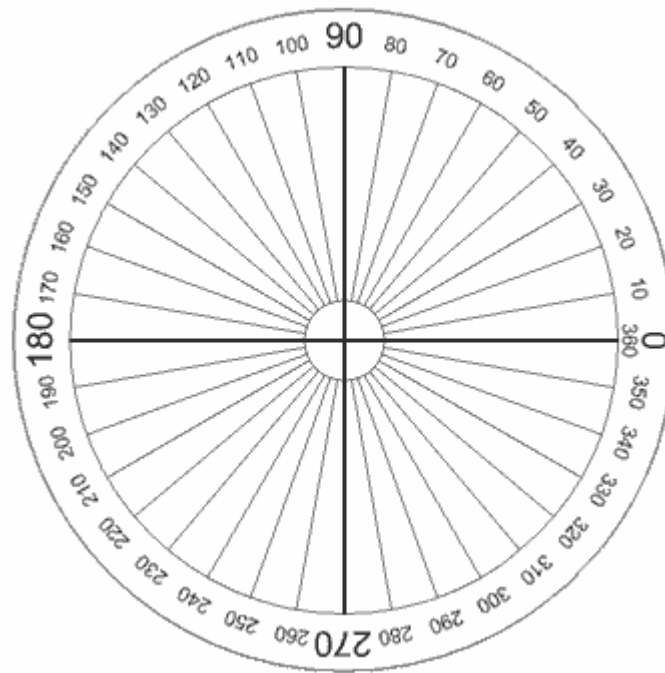
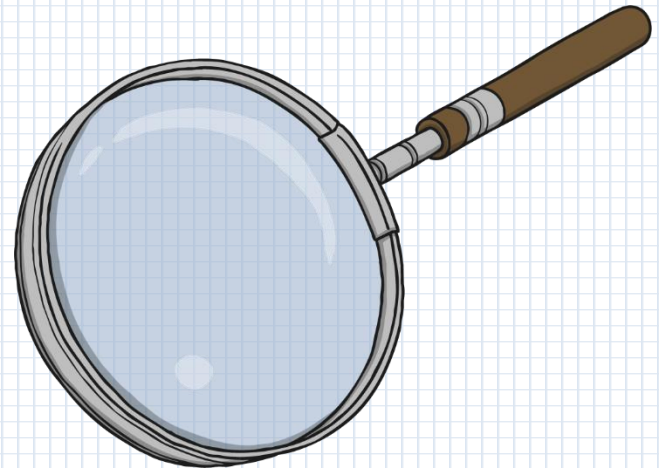


Calculating Angles around a point



Learning Objectives

- Perform mental subtraction calculations.
- Be able to calculate unknown angles around a point



Subtracting

$$40 - 10 = ?$$

$$80 - 30 = ?$$

Subtracting

$$50 - 20 = ?$$

$$140 - 10 = ?$$

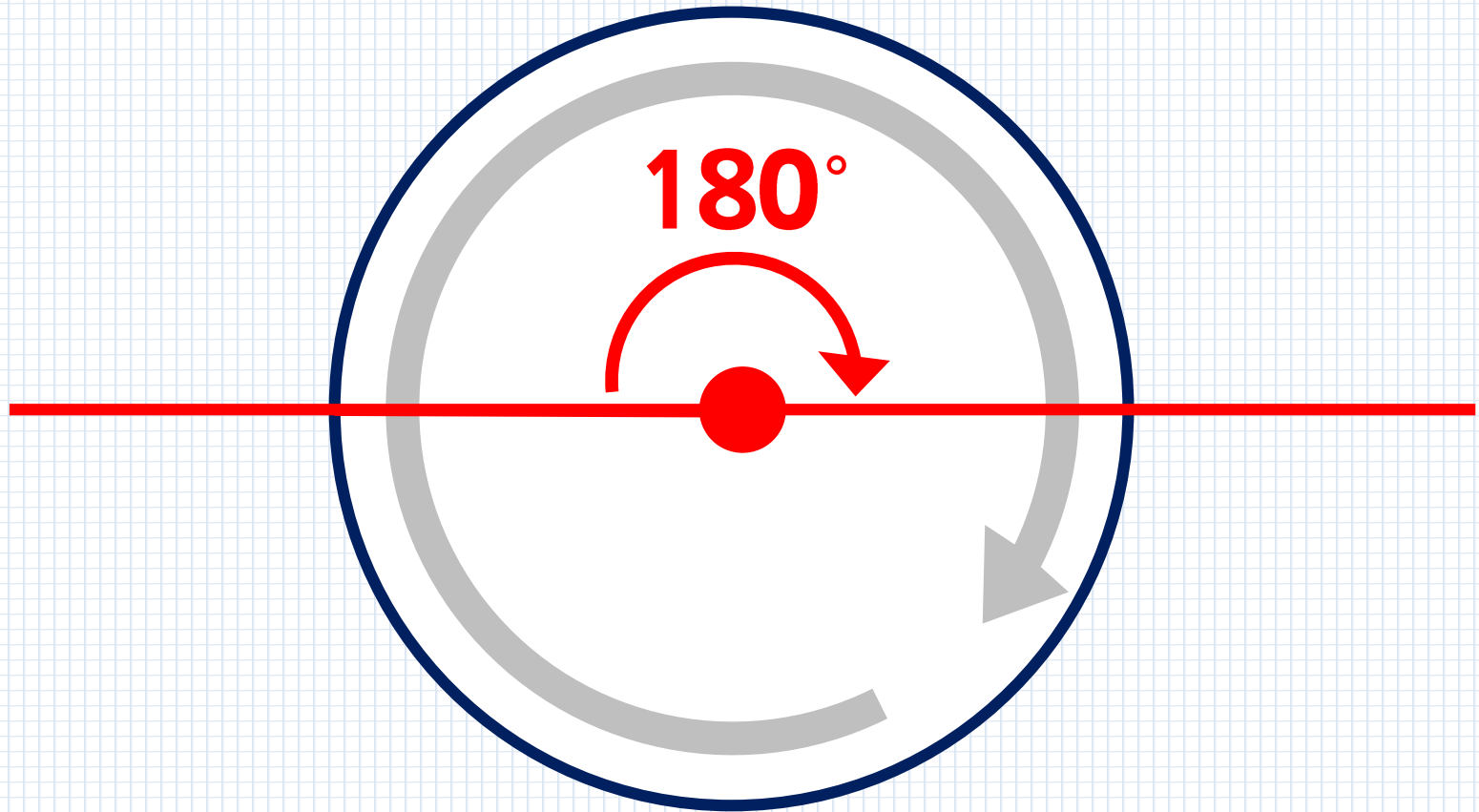
Subtracting

$$180 - 70 = ?$$

$$190 - 95 = ?$$

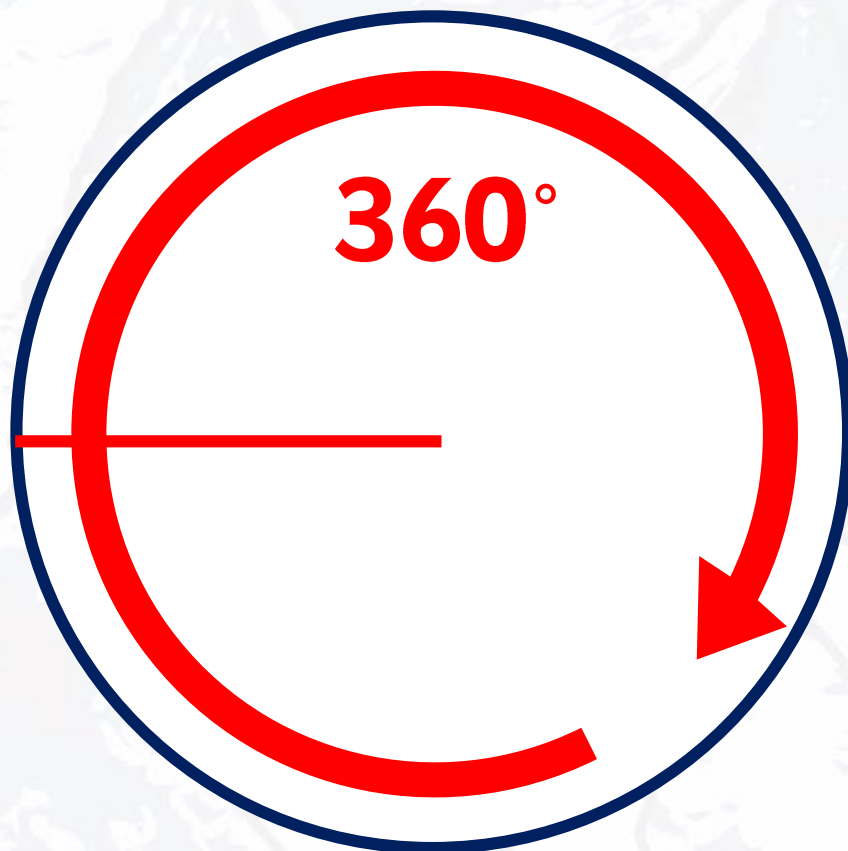
Recap – Straight Angles

A half of a full turn is called a straight angle. It measures 180°



A Full Turn

A full turn is when a line turns around in a complete circle.
It measures 360°



A snowboarder attempts a 360° spin but doesn't quite make it. How many degrees has he missed the turn by?



300°

A snowboarder attempts a 360° spin but doesn't quite make it. How many degrees has he missed the turn by?



210°

A snowboarder attempts a 360° spin but doesn't quite make it. How many degrees has he missed the turn by?



170°

Key Terms

degrees

scale

subtract

180°

360°

The End

